

WESTMORELAND  
LAND TRUST

---

ANNUAL REPORT 2018





## **Board Members during 2018**

Fred Bononi  
Mark Bowers  
Tammy Colt  
William Danchuk  
Chuck Duritsa  
Martha Frech  
Alex Graziani  
Ted Harhai  
Karen Jurkovic  
Ted Kopas  
Brian Lawrence  
Lewis Lobdell  
John Lohr  
Jane Menchyk  
William Mihalco  
Greg Phillips  
Tony Quadro  
Malcolm Sias  
Virginia McCracken Stump  
Joseph "Jay" Tarara  
Theo van de Venne  
John Ward





The land trust marked its 10<sup>th</sup> year of conserving special places in Westmoreland County with several accomplishments.

## HIGHLIGHTS OF 2018

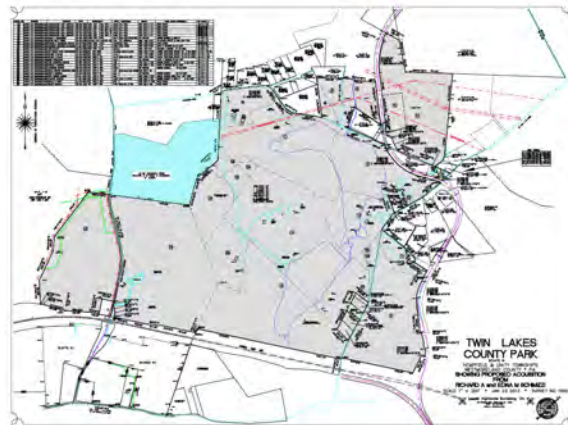
- Partnering with Westmoreland County Parks and Recreation to enlarge Twin Lakes Park
- Evaluating and selectively advancing several conservation projects
- Working with Fred Bonci to develop a preliminary conceptual plan for a prospective acquisition
- Undertaking significant stewardship and trail building work
- Supporting Westmoreland County's 2018 March for Parks
- Completing a successful annual fundraising campaign
- Establishing provisions to accept donated securities
- Engaging AmeriCorps Service Member Kodie Rearick (on a shared basis)
- Hosting a 10<sup>th</sup> Anniversary Celebration
- Publishing a new general brochure

## LAND ACQUISITION

The land trust helped Westmoreland County Parks and Recreation acquire land to expand Twin Lakes Park. The acquisition was financed by grant funding from the Pennsylvania Department of Conservation and Natural Resources, the Colcom Foundation, and the land trust. This approximately 39 acre property is now part of the Twin Lakes Expansion Area. Consisting predominantly of open fields, it will allow for future development of additional park facilities and future establishment of roadway and trail connections between Twin Lakes infrastructure and the Twin Lakes Expansion Area.

This acquisition continues the land trust's practice of working to expand existing parks and nature reserves or build greenway connections between them. Past projects have benefitted Westmoreland County's Cedar Creek and Mammoth Parks, Murrysville's Duff and Pleasant Valley Parks, and the Lillian Kellman and Peter and Victoria Skena Nature Reserves.

The land trust also works to acquire separate parcels to be conserved as nature reserves. To date, the land trust has conserved or partnered to conserve 12 properties totaling 274 acres throughout Westmoreland County.



*Approximate depiction of expansion of Twin Lakes Park*



## ADMINISTRATION AND STAFFING



In 2018 AmeriCorps Service Member Kodie Rearick joined the land trust's part-time Executive Director Betsy Aiken. Kodie's work was shared on a 50/50 basis with the Westmoreland Conservation District from her start in August of 2018. Kodie brings considerable experience with field work and program management, and her service has been an invaluable resource for the land trust.

As staffing remains very limited, the land trust continues to rely heavily on the efforts of board members and volunteers. The land trust has been fortunate, with board members generously offering their work in a wide range of disciplines, and volunteers significantly helping with our work.

*Kodie Rearick (at right) donating a book on behalf of the land trust to Stephanie Capasso, Director of the Manor Public Library.*

## EVALUATION OF PROJECTS



*Evaluating potential acquisitions*



Throughout the year, the land trust evaluated several potential projects throughout the county. Evaluation entails one or more site visits, research, and discussions with the landowners. **Project Selection Criteria** are used to consider many factors including the land's characteristics, potential problems, extent of public benefit, availability of project partners, availability of funding needed for acquisition or stewardship, and confirmation of sufficient capacity for management.

Of several projects evaluated during 2018, the land trust is working to advance those with the most conservation value. This effort involves further work on the ground; securing of financial resources; and development of a vision and preliminary management objectives for the property.

For one prospective project, the land trust had the good fortune to work with landscape architect Fred Bonci of **LaQuatra Bonci Associates** and several community leaders. Fred very generously led a visioning workshop and then used input from it to develop a preliminary conceptual plan for the property.



*Visioning workshop*

## PROPERTIES MANAGED BY THE LAND TRUST

All the land that the land trust has conserved to date is presently owned by Westmoreland County, a local municipality, or a watershed association. This conserved land includes two properties that the land trust actively manages for Westmoreland County. These two properties, the Otto and Magdalene Ackermann Nature Preserve and Cabin Hill, are distinctly different from each other.

The **Otto and Magdalene Ackermann Nature Preserve** is a hidden treasure in North Huntingdon Township. It is an approximately 59 acre property of exceptional beauty, with a healthy forest and intact understory, an old stone quarry, steep slopes and scenic views, three small waterfalls, and a tributary to Brush Creek. The Preserve is worthwhile to visit year-round for its scenery and the quality of its forest.

Throughout the year it is a popular destination for naturalists, bird watchers, botanists, hikers, walkers and runners, photographers, those interested in its forest, as well as casual visitors who simply wish to picnic or visit a beautiful nature preserve.

### HISTORY OF THE OTTO AND MAGDALENE ACKERMANN NATURE PRESERVE

Otto and Magdalene Ackermann married after meeting while hiking in their native Germany. They emigrated to the United States, where Otto worked for Westinghouse Electric Company and the couple settled in Wilksburg before moving with their children to Irwin.

The Ackermanns loved nature, and purchased the 59 acre property near Ardara, North Huntingdon Township, in 1937. They never intended to live on the property, but visited it for bird watching, nature study, hikes and picnicking. Eventually they opened it for public use as a nature reserve.

Otto was an amateur lepidopterist, assembling what was believed to then be one of the largest butterfly collections in the world. The Ackermann family often collected eggs and raised butterflies and moths through the stages of metamorphosis.

After Otto and Magdalene passed, their five children and their respective families continued to maintain the property both for their own and for public use. After most eventually moved away from the area, the children chose to donate the Preserve to ensure its conservation in perpetuity. The donation was completed in April 2009, and each of the five siblings contributed \$1,000 to the Westmoreland Land Trust to help with maintaining the property. Since then, members of the family return to visit, have furnished much historical information about the property, and have continued to make donations toward upkeep of the Preserve.



*During a family visit in September 2018, the land trust had the good fortune to meet with Joanne and Norbert Ackermann and Bob Michaud to record their recollections about the family's ownership of the Ackermann Preserve.*

*“I am so pleased that the land trust is really taking care of the land quite well ..... The trails are beautiful ..... You have been so effective in maintaining the place.”*

Norbert Ackermann, September 23, 2018

**Cabin Hill** is an approximately 3-1/2 acre wooded parcel along Business Route 66 at the northern entrance to the City of Greensburg. While the property does not hold the ecological value of the Otto and Magdalene Ackermann Nature Preserve, it preserves a forested overstory of natural open space and a forest viewshed at the northern entrance to the City of Greensburg.



*Although Cabin Hill has a forested overstory, it holds many types of invasive plants. Purple or white Dame's Rocket is attractive while blooming but holds little ecological value and interferes with the growth of plant species better suited for a balanced ecosystem and habitat of indigenous species.*

## STEWARDSHIP ACTIVITIES



*Winter stewardship work*

Stewardship of conserved properties is one of the most important activities of the land trust. A detailed inspection of each property is completed at least once a year, and stewardship work as warranted by these inspections is completed. Work includes confirming boundary markers, building or maintaining trails, removing

invasive plants, planting trees or shrubs, and cleaning up rubbish. Stewardship effort is undertaken by land trust board members, staff, and volunteers. **Volunteer assistance** for stewardship activities is extremely helpful, and is welcomed and encouraged.



*Ongoing effort is needed for control of Japanese knotweed*

Today **control of invasive plants is a substantial stewardship challenge**. Although the Otto and Magdalene Ackermann Nature Preserve is relatively pristine, volunteers nonetheless remove many invasive plants throughout the year including garlic mustard, Japanese stiltgrass, bush honeysuckle, and mile-a-minute vine. For several years the land trust has engaged professional Art Gover for control of Japanese knotweed; after much effort, the Japanese knotweed in the Preserve is almost fully controlled where it grew aggressively in the floodplain of a tributary to Brush Creek. However, continuing effort will be needed to counter its reintroduction from neighboring properties or the stream. The Japanese stiltgrass which has succeeded the Japanese knotweed in the floodplain brings a related new challenge.

A generous contribution from Patrick and Lynn Gurrentz provided for the land trust's **purchase of trail building tools** (the land trust previously borrowed tools for trail building work days from the Allegheny Land Trust or asked volunteers to bring their own). The land trust's tools, along with much volunteer help throughout the year, allowed completion of significant trail work at the Otto and Magdalene Ackermann Nature Preserve.



*New tools supported significant trail building*



In 2018, the land trust adopted a **limited hunting program for deer management at the Ackermann Preserve**. In parts of the Preserve there is considerable evidence of deer browse, which limits regeneration of trees.

During 2018 **Columbia Gas of Pennsylvania and Maryland** helped substantially with stewardship work at the Otto and Magdalene Ackermann Nature Preserve. Columbia Gas's generous assistance included a contribution of \$1,000; participation of six employees in a June work day at the Preserve, and a subsequent monetary gift – recognizing Columbia employees' volunteer effort - from a Dollars for Doers program. 2018 marked the 2<sup>nd</sup> consecutive year of Columbia Gas employees' assistance at the Preserve.



*Columbia Gas Volunteers*

Employees of **First National Bank and W.N. Tuscano Insurance Agency** provided welcome help at the Preserve during the **United Way Day of Caring** in September.

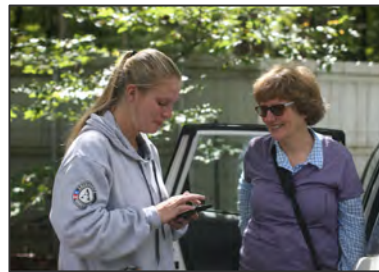


*First National Bank volunteers with AmeriCorps Service Members Alyssa Harden and Kodie Rearick (not pictured are volunteers from the W.N. Tuscano Insurance Agency)*

Fifteen **RAI Trade Marketing Services Company** employees also contributed a productive September work day at the Ackermann Preserve. All this assistance - along with many separate visits and careful planning by the land trust's Stewardship Committee - made for a year of exceptional productivity at the Ackermann Preserve, with construction of a new trail, considerable improvement of an existing trail, and significant invasive plant control.



*RAI volunteers*



*Scenes from work days  
at the Ackermann Preserve  
(Photos courtesy of  
Lori Yesconis and Cary Bohl)*



## COMMUNICATIONS AND OUTREACH

Communications and outreach are essential parts of the land trust's work, both to advance appreciation of land conservation and to raise the visibility of how the land trust can work with property owners to conserve their land.



Board member Karen Jurkovic and Westmoreland Conservation District Visual Communication Specialist Mark Jackson developed a **10<sup>th</sup> anniversary logo** for use on stationery, posters, and other land trust materials throughout the year.



In March the land trust joined **Westmoreland County's 2018 March for Parks** for the 5<sup>th</sup> consecutive year.



Land trust representatives helped with organization and planning of the event, and board members led land trust participation at each of the March's two venues for 2018 – Twin Lakes Park and Murrysville. The land trust team handed in \$542 of donations on the day of the event, and additional work by land trust representatives helped to bring in considerably more. The March for Parks is the largest fund raising activity for Westmoreland County's parks and trails; donations may be designated for park or trail land acquisition. The 2018 March raised \$86,100.

*March for Parks (photo courtesy of Cary Bohl)*



The land trust participated in the April 21 **Earth Day Celebration** at the **Winnie Palmer Nature Reserve**. Many board members helped significantly with our presence: Jay Tarara donated many games and prizes, and represented the land trust along with Betsy Aiken; Karen Jurkovic contributed handmade children's nature journals;

Tammy Colt provided animal identification puzzles; and Martha Frech prepared a children's Environmental Survey. Over 750 people participated in the celebration.

*Environmental Survey for Earth Day*



Westmoreland Land Trust board member Mark Bowers guided a **Westmoreland Botanical Society walk through the Ackermann Preserve** on April 29. The intact understory and steep slopes of the preserve provide excellent opportunity for botanists to observe spring ephemerals and other plants and wildflowers.

*Westmoreland Botanical Society walk through the Ackermann Preserve*



The land trust took part in the June 29<sup>th</sup> **Next Generation Farm Summit** hosted by the Westmoreland Conservation District. At the conference the land trust discussed possibilities for conserving their land with participating farmers and landowners.

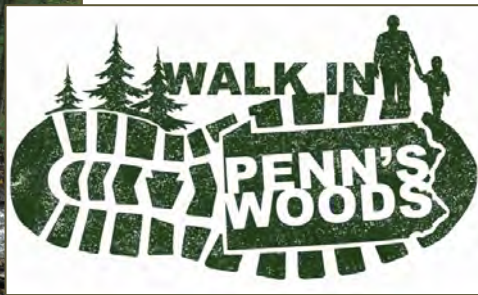
*2018 Next Generation Farm Summit (photo courtesy of Mark Jackson)*



On September 14, 2018, the Westmoreland Land Trust was the featured community organization for **Art of Tap** at the **Westmoreland Museum of American Art**. Several board members participated as a way to reach a new audience with information about the work of the land trust.

*Participants at Art on Tap*

More than 120 people attended a September 22<sup>nd</sup> for a **10<sup>th</sup> Anniversary Celebration**. Thanks to excellent planning by our committee, extremely generous individual and corporate sponsorship and contributions; and assistance from many board members, their families, and volunteers, the event was not only a great success and great fun – but it also generated over \$4,000 for conservation work! Josh Raulerson of the Pennsylvania Environmental Council served as emcee; the NewLanders entertained; and County Commissioner Ted Kopas led an auction of many items donated by board members and their families (*photos courtesy of Mark Jackson*).



On October 7, the land trust cohosted a **Walk in Penn's Woods** with the **Westmoreland Woodlands Improvement Association** at the Ackermann Nature Preserve. The Preserve is well suited for this walk for its beauty and the age, variety and quality of its trees.

*2018 Walk in Penn's Woods (photos courtesy of Cary Bohl)*

In 2018, the land trust cohosted a **Westmoreland County 2018 Outdoor Amateur Instagram Photo Contest** with the **Westmoreland Bureau of Parks and Recreation** and the **Westmoreland Heritage Trail**. Photos were taken at a Westmoreland County park, trail, or nature preserve.

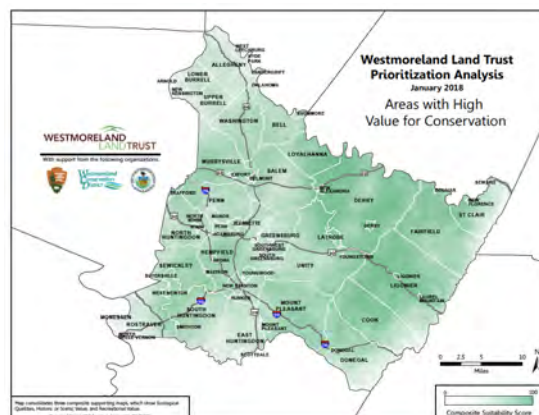
*Noteworthy contest entries included Denise Eidemiller's photo of a mallard with her ducklings; John Wizzard's photo of wagons at Hannastown, and Keith Savannah's photo at Twin Lakes*



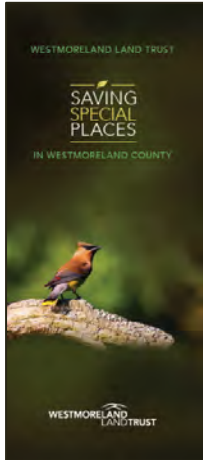
Throughout the year the land trust also worked to support development of *Reimagining our Westmoreland*, the new comprehensive plan for Westmoreland County. The land trust worked to ensure that the plan recognized the importance of strategic conservation of land of special value in the county.

## PRIORITIZATION OF FUTURE WORK

To guide future work to conserve land of special value in Westmoreland County, the land trust completed a rigorous evaluation of land across Westmoreland County. The analysis considered many characteristics and criteria relating to the ecological, historic, scenic, and recreational value of land. Working with **Westmoreland County Planning**, the land trust developed detailed GIS maps and made use of Community Viz software to layer the maps to yield a composite map indicating the areas most appropriate for future focused outreach.



For this extensive analysis, the land trust benefitted from assistance from many partners in addition to **Westmoreland County Planning**, including the **National Park Service**, the **Pennsylvania Game Commission**, the **Western Pennsylvania Conservancy**, the **Westmoreland Conservation District**, **Westmoreland County Parks and Recreation**, and **Westmoreland County Agricultural Land Preservation**.



To start to apply the analysis, the land trust sought and received a grant from the **Pennsylvania Department of Conservation and Natural Resources, Bureau of Recreation and Conservation**, administered by the **Pennsylvania Environmental Council** as part of the **Laurel Highlands Conservation Landscape** initiative. With support from this grant, the land trust completed development of a **new general brochure, "Saving Special Places"** in December, working with **John Hapach Creative/Art Direction and Design**. Area photographers and naturalists as well as board members contributed to the brochure's photography. The brochure is the first of two, to be followed in 2019 by a more detailed brochure about the prioritization effort.



The land trust conducted a **Fall 2018 Fundraising Campaign** to coincide with **Give Big Pittsburgh**, raising more than \$20,460 in donations. During 2018 the land trust also established provisions to accept donated securities.

For the first time in 2018, the land trust attained 100% participation by board members making a monetary contribution. Individual and corporate contributions, foundation support, grants, and in kind donations throughout the year also helped the land trust tremendously.

## 2018 DONORS

### Benefactor

\$10,000 and above

Laurel Foundation  
Westmoreland County

### Patron

\$5,000 to \$9,999

Lynn and Patrick Gurrentz  
Benard A. Sampson

### Friend

\$2,500 to \$4,999

Norbert and Joanne Ackermann  
Community Foundation of Westmoreland County  
Laurel Highlands Conservation Landscape Program

### Sponsor

\$1,000 to \$2,499

Columbia Gas of PA and MD

Land Trust Alliance

Arvind Paranjpe and Betsy Aiken

**Partner**

\$500 to \$999

Chuck and Judy Duritsa  
Howard Hanna Real Estate Services  
PNC Financial Services  
Quatrini Rafferty P.C.  
Jay and Mary Lou Tarara

Spitzer Toyota  
Tender Care Early Learning Centers  
John Ward  
Delia White

**Associate**

\$250 to \$499

William Danchuk  
Ted Harhai

Regis Synan Family Fund  
Theo van de Venne

**Donor**

Up to \$249

Anonymous  
John Arganian  
Carl Baumeister  
Dorothy Beckwith  
Cary Bohl  
Fred Bononi  
Mark Bowers  
Susan Caroleo  
Mark and Mary Cholock  
Tammy Colt  
First Evangelical  
Lutheran Church of Greensburg  
Dr. J. K. Folmar  
Martha Frech  
Joanne Hall

Rosalyn Heilman  
Susan Huba  
Karen Jurkovic  
Maureen Kelly  
Ted Kopas  
Larry Larese  
Brian Lawrence  
David Lester  
John Lohr  
Andrew Mack  
Linda Marts  
Janet McNeel  
Helga Mears  
Jane and Sam Menchyk  
Sue Mignogna

William Mihalco  
Kiran Paranjpe  
Rhonda Pegg  
Greg Phillips  
Tony Quadro  
Malcolm Sias  
Pamela Siegel  
Loree Speedy  
Virginia Stump  
Katie Tarara  
Anjelica Temple  
Westmoreland SCORE  
Rhonda Whitsel

**In-Kind Donations of Services or Goods**

Bartlett Tree Experts  
Fred Bononi  
Tammy Colt  
William Danchuk  
Chuck Duritsa  
Norbert Duritsa  
John Hapach Creative/Art Direction and Design  
Ted Harhai  
Mark Jackson  
Karen Jurkovic  
Ted Kopas  
LaQuatra Bonci Associates  
Brian Lawrence  
Katherine Laffey Lobdell

John Lohr  
The NewLanders  
Arvind Paranjpe and Betsy Aiken  
Samara Trusso  
Pennsylvania Game Commission  
Rivertowne Brewing  
Colin Sheehy (Pittsburgh Camera)  
Loree Speedy  
Virginia Stump  
Jay Tarara  
Ford Business Machines  
Westmoreland Conservation District (use of  
office space and facilities)  
Wilson Candy Company

## BOARD REPORT

Six regular board meetings and six Executive Committee meetings were held during 2018. During the year, the land trust accomplished the following objectives:

- Ensured land conservation was a priority in the Westmoreland County Comprehensive Plan
- Hosted a major public event to mark our 10<sup>th</sup> anniversary
- Undertook a successful fundraising campaign
- Engaged a part-time AmeriCorps service member
- Held a photo contest with the **Westmoreland County Bureau of Parks and Recreation** and the **Westmoreland Heritage Trail**.

The land trust also made significant progress toward the following objectives:

- Continuing to work toward completion of a major acquisition
- Advancing several land-conservation possibilities
- Pursuing eligibility for Pennsylvania's **Educational Improvement Tax Credit** program
- Adding prospective individual and corporate donors to a fundraising database
- Completing prioritization and developing materials for focused outreach based on it.

Board changes during the year included the resignation of Mark Bowers, Alex Graziani, and Lewis Lobdell, all founding members of the board. Lewis continued as a member of the land trust's Development Committee, and Mark as a member of the Stewardship Committee. New board appointments included Jane Menchyk, Bill Danchuk, and Bill Mihalco.

Officers throughout 2018 were: Chuck Duritsa, chair; Tony Quadro, vice-chair; Loree Speedy, secretary; Martha Frech, treasurer; Fred Bononi, assistant treasurer; and Karen Jurkovic, assistant secretary. The Executive Committee, made up of the organization's four primary officers, selected John Lohr as its fifth member.

A detailed board member job description was developed; work was started on a board manual; and the land trust's bylaws were amended to include:

- a provision for non-residents of Westmoreland County to serve on the Board
- a definition of the Executive Committee and its function
- the options of compilation or review of financial records in those years when the Land Trust's level of financial activities do not warrant an audit
- application of Conflict of Interest requirements to staff members.

With the help of a grant from the **Community Foundation of Westmoreland County**, board member Loree Speedy and executive director Betsy Aiken attended the 2018 **Pennsylvania Land Trust Association** conference, and board members John Lohr, Loree Speedy, Martha Frech, Tony Quadro and Betsy Aiken attended the 2018 **Land Trust Alliance** conference. Participation in the Land Trust Alliance conference was also supported by scholarship funding from the Land Trust Alliance.

## FINANCIAL STATEMENTS

**DeBlasio & DeBlasio Associates** completed **compilation of the Westmoreland Land Trust financial statements** for 2018 and 2017. DeBlasio & DeBlasio conducted their compilation engagement in accordance with the Statement on Standards for Accounting and Review Services (SSARS) promulgated by the Accounting and Review Services Committee of the American Institute of Certified Public Accountants (AICPA) and complied with applicable professional standards, including the AICPA's *Code of Professional Conduct* and its ethical principles of integrity, objectivity, professional competence, and due care, when performing the bookkeeping services, preparing the financial statements, and performing the compilation engagement.

The Westmoreland Land Trust classifies its resources for accounting and reporting purposes into two net asset categories according to externally (donor) imposed restrictions. For the year ended December 31, 2018, the Organization had the following net asset categories:

1. Net Assets without Donor Restrictions: Net assets that are not subject to donor imposed restrictions.
2. Net Assets with Donor Restrictions: Net assets subject to donor imposed restrictions that will be met by the passage of time or by actions of the organization.

---

**Westmoreland Land Trust**  
**Statement of Assets, Liabilities, and Net Assets- Modified Cash Basis**  
**As of December 31, 2018 and 2017**

	<u>2018</u>	<u>2017</u>
<b>Assets</b>		
<b>Current Assets</b>		
Cash and Cash Equivalents	\$ <u>130,994</u>	\$ <u>128,228</u>
<b>Total Assets</b>	\$ <u>130,994</u>	\$ <u>128,228</u>
<b>Liabilities and Net Assets</b>		
<b>Net Assets</b>		
Net Assets Without Donor Restrictions	\$ 101,412	\$ 68,298
Net Assets With Donor Restrictions	<u>29,582</u>	<u>59,930</u>
	<u>130,994</u>	<u>128,228</u>
<b>Total Liabilities and Net Assets</b>	\$ <u>130,994</u>	\$ <u>128,228</u>

**Westmoreland Land Trust**  
**Statement of Revenues, Expenses, and Other Changes in Net Assets - Modified Cash Basis**  
**For the Year Ended December 31, 2018**

	<u>Without Donor Restrictions</u>	<u>With Donor Restrictions</u>	<u>Total</u>
<b>Revenues and Other Support</b>			
Grant and Donations	\$ 46,854	\$ 9,514	\$ 56,368
Special Events	7,518	-	7,518
Interest Income	815	-	815
Net Assets Released from Restrictions	<u>39,862</u>	<u>(39,862)</u>	<u>-</u>
<b>Total Revenue</b>	<u>95,049</u>	<u>(30,348)</u>	<u>64,701</u>
<b>Expenses</b>			
Zimmaro Property	27	-	27
Special Events	4,142	-	4,142
Professional Services	37,200	-	37,200
Insurance	1,102	-	1,102
Conferences and Meetings	4,621	-	4,621
Ackermann Property Maintenance	250	-	250
General Administrative Expenses	1,240	-	1,240
Advertising	287	-	287
Membership Dues	553	-	553
Trail Construction	615	-	615
Organizational Dues and Registration Fees	100	-	100
Equipment Lease and Rent	257	-	257
Payroll Expenses	61	-	61
Land Asset Expense	10,000	-	10,000
Land Stewardship	78	-	78
Miscellaneous Expense	<u>1,402</u>	<u>-</u>	<u>1,402</u>
<b>Total Expenses</b>	<u>61,935</u>	<u>-</u>	<u>61,935</u>
<b>Change in Net Assets</b>	33,114	(30,348)	2,766
<b>Beginning Net Assets - January 1</b>	<u>68,298</u>	<u>59,930</u>	<u>128,228</u>
<b>Ending Net Assets - December 31</b>	<u>\$ 101,412</u>	<u>\$ 29,582</u>	<u>\$ 130,994</u>

**Westmoreland Land Trust**  
**Statement of Revenues, Expenses, and Other Changes in Net Assets - Modified Cash Basis**  
**For the Year Ended December 31, 2017**

	<u>Without Donor Restrictions</u>	<u>With Donor Restrictions</u>	<u>Total</u>
<b>Revenues and Other Support</b>			
Grant and Donations	\$ 21,222	\$ 41,250	\$ 62,472
Interest Income	372	-	372
Net Assets Released from Restrictions	<u>30,467</u>	<u>(30,467)</u>	<u>-</u>
<b>Total Revenue</b>	<u>52,061</u>	<u>10,783</u>	<u>62,844</u>
<b>Expenses</b>			
Zimmaro Property	5,244	-	5,244
Special Events	122	-	122
Professional Services	4,826	-	4,826
Insurance	2,551	-	2,551
Conferences and Meetings	515	-	515
Ackermann Property Maintenance	530	-	530
General Administrative Expenses	1,046	-	1,046
Advertising	655	-	655
Membership Dues	786	-	786
Appraisals	1,200	-	1,200
Organizational Dues and Registration Fees	200	-	200
Equipment Lease and Rent	266	-	266
Payroll Expenses	24,117	-	24,117
Land Asset Expense	10,097	-	10,097
Land Stewardship	<u>136</u>	<u>-</u>	<u>136</u>
<b>Total Expenses</b>	<u>52,291</u>	<u>-</u>	<u>52,291</u>
<b>Change in Net Assets</b>	(230)	10,783	10,553
<b>Beginning Net Assets - January 1</b>	<u>68,528</u>	<u>49,147</u>	<u>117,675</u>
<b>Ending Net Assets - December 31</b>	<u>\$ 68,298</u>	<u>\$ 59,930</u>	<u>\$ 128,228</u>



# WESTMORELAND LAND TRUST

... SAVING SPECIAL PLACES IN WESTMORELAND COUNTY

## PROPERTIES CONSERVED

---

Since its founding, the Westmoreland Land Trust has conserved or helped to conserve **12 properties comprising 274 acres throughout Westmoreland County, with a cumulative value exceeding \$1,740,000.**

Properties conserved to date are as follow:

### Hempfield Township

- 39 acres adjacent to Twin Lakes Park

### Murrysville

- 49 acres adjacent to Duff Park
- 22 acres linking Duff Park and Pleasant Valley Park



*Dutchman's Breeches in Duff Park  
Photo courtesy of Theo van de Venne*



*Great horned owl nestling in  
the Turtle Creek Gorge  
Photo courtesy of Dale Matuza*

- 9 acres adjacent to Duff Park
- 16.5 acres adjacent to Duff Park
- the 22 acre Peter and Victoria Skena Nature Reserve (*contiguous with the 55-acre Lillian Kellman Nature Reserve*)

### Ligonier Township

- 4 acres along Route 30 (conserved in partnership with the Western Pennsylvania Conservancy and the Loyalhanna Watershed Association)

### North Huntingdon Township

- the 59-acre Otto and Magdalene Ackermann Nature Preserve in Ardara

*View from the Ackermann Preserve  
Photo courtesy of Cary Bohl*



### Rostraver Township

- 21 acres along the Youghiogheny River (*added to Cedar Creek Park*)
- 28 acres bordering the Cedar Creek Gorge (*added to Cedar Creek Park*)

### Mount Pleasant Township

- 1 acre along State Route 982 (*added to Mammoth Park*)

### City of Greensburg

- 3.5 acres on Cabin Hill

*The Westmoreland Land Trust is a 501(c)3 nonprofit organization.  
Contributions are tax deductible under the provisions of  
the Internal Revenue Code to the extent of the law.*

**[www.westmoreland-landtrust.org](http://www.westmoreland-landtrust.org)**





## Mission, Vision and Values

---

### Mission

To conserve and steward lands and waters of Westmoreland County that harbor ecological, scenic or recreational qualities to offer a healthier and more sustainable future for all.

### Vision

All Westmoreland County residents and visitors enjoy the scenic and natural value, accessibility and quality of open space conserved. Throughout Westmoreland County recreational land abounds, water resources are protected, wildlife flourish, and the quality of life is high because of the continuing work of the Westmoreland Land Trust complementing the work of like-minded entities.

### Values

#### **The Westmoreland Land Trust values:**

- **Conservation** of diverse real property that is:
  - in, or in close proximity to, Westmoreland County
  - culturally, historically, ecologically, recreationally, or scenically valuable.
- **Restoration, protection, and maintenance** of conserved property as appropriate for its best long-term stewardship.
- **Partnership** with public or private entities where beneficial to encourage collective effort.
- **Research and planning** in support of conservation efforts.
- **Promotion** and education of conservation opportunities and benefits.
- **Conformance** with the Land Trust Standards and Practices published by the Land Trust Alliance in 2004, or as amended.



WESTMORELAND LAND TRUST  
218 DONOHUE ROAD | GREENSBURG, PA 15601  
(724) 325-3031  
[westmoreland-landtrust.org](http://westmoreland-landtrust.org)

The Westmoreland Land Trust is a 501(c)3 nonprofit organization.  
Contributions are tax deductible under the provisions of the Internal Revenue Code to the extent of the law.

