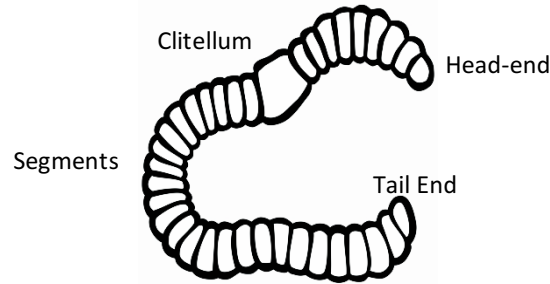


Earthworm Wonders!

Name(s) _____



Find an earthworm and put it on a paper plate with a little water to keep it moist. Gently examine your earthworm. Identify and check-off the following body parts:

- The **mouth** is a cavity through which the earthworm eats. It is located at the tip of the head-end. (The head is the area closest to the clitellum.) The mouth is covered by a tiny flap.
- The **clitellum** is the enlarged part of the earthworm that contains the reproductive organs and produces the eggs.
- The earthworm's body is divided into hundreds of rings called **segments**. Use a magnifying glass to see the tiny bristles (or hairs) on the underside of the earthworm, called **setae**.
- The **tail-end** is the opening at the end of a worm through which waste exits. Earthworm waste, or *castings*, is an important and valuable soil fertilizer.

Light or Dark? - Place a piece of black construction paper over one end of a paper plate and time how long it takes for the earthworm to head toward the shade. Remember, earthworms are very sensitive to light.

Measuring Length - Carefully place your earthworm next to a ruler. Your earthworm may twist and turn and try to wiggle away, so be patient and make your best estimate of the earthworm's length.

Draw and Label Your Earthworm